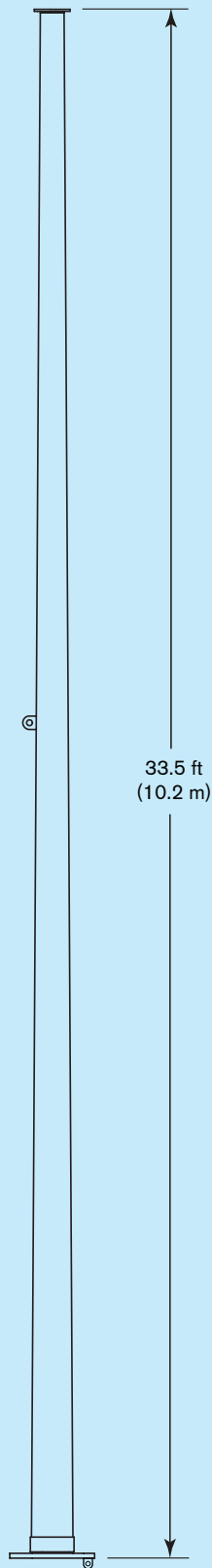


Side View



SKYSTREAM™

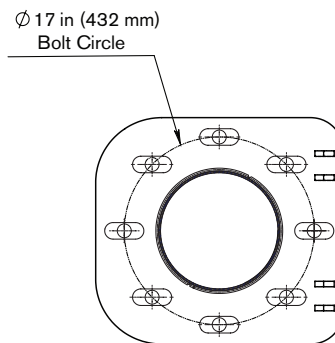
33-17 (33.5 ft /10.2 m) Tilt-Up Single-Piece Monopole Tower

Lower priced option appropriate for open-field, high wind sites. Maybe useful for demonstration sites where energy output isn't a concern.

Technical Specifications

Model	33-17 Skystream Tower
Part Number	With Land Skystream 3.7: part # 3-1-SSL-240-33-U With Land Skystream 3.7: part # 3-1-SSM-240-33-U
Foundation	Mat/Pier
Foundation Bolts	32 in J-bolts: part # 3-CMBP-3048-02 (Mat) 42 in J-bolts: part # 3-CMBP-3048-01 (Pier)
Height	33.5 ft (10.2 m)
Bolt Circle	17 in (432 mm)
Type	Monopole
Construction	Galvanized tubular steel
Number of Sections	1
Shipping	Flatbed truck
Weight	550 lb (249.5 kg)
Installation Tools	Gin pole - part number 2-TWS-101 Hinge plate - part number 2-SSOT-100

Bottom View



Southwest Windpower

1801 W. Route 66
Flagstaff, AZ 86001 USA

928.779.9463

www.skystreamenergy.com

Makers of Skystream™ / AIR / Whisper